



IMPORT | WHOLESALE | MANUFACTURING



PRODUCT CATALOG

OUR STORY

HCO Industries is a privately held corporation based in Donald, OR USA and serves as a direct importer, wholesaler, and manufacturer of rubber, steel, and plastic commodity goods. We specialize in rubber tarp straps, rubber rope, bungee shock cord, webbing, and cargo control hardware. Additionally, we offer a wide range of industry related services and manufacturing capabilities.

We have maintained long-standing industry relationships for over 30 years with many primary manufacturers, both foreign and domestic, in six different countries. Our diversification has allowed us to stay flexible and offer our customers a larger range of in-stock commodity products as well as a multitude of product sourcing and manufacturing services to fulfill their requirements.

Our customer base is comprised mainly of wholesale distribution companies, product manufacturers, OE suppliers, and box retailers. The primary markets we currently serve include transportation, construction, automotive, agriculture, manufacturing, and general industrial.

We protect our valued customer base by thoroughly vetting every account prior to approval with a strict set of pre-qualification standards. Since our inception, we have focused on maintaining a high standard of quality products and services as well as providing a level of customer service that is unparalleled within the industry.

HCO Industries is dedicated to meeting our customer's needs and requirements. Every member of our company is a team player. From management to order fulfillment, the staff at HCO Industries is proud to serve you, our customer.

We strongly believe in the moral foundations of Honesty and Integrity, and we strive to demonstrate them daily in our business operations. For more information about HCO Industries, please feel free to browse our website, or contact us directly.

We look forward to working with you!

OUR MISSION

Build and maintain long-standing customer relationships on the core values of Honesty and Integrity.

Offer quality products and services paired with unmatched customer service to all our valued customers both foreign and domestic.

Provide our customers with competitive pricing for today's ever-changing markets.



TABLE OF CONTENTS

TARP STRAPS4

RUBBER ROPE4

SHOCK CORD5

CORDAGE HOOKS & FITTINGS6

RATCHETS7

CAM BUCKLES8

OVERCENTER BUCKLES.....9

ATTACHMENT HARDWARE10

WEBBING19

STRAP WINDERS20

CORNER PROTECTORS21

RUBBER BANDS23

WHEEL CHOCKS.....24

COIL RACKS.....24

TARP STRAPS



NATURAL RUBBER

4"	#R-RTS-1004
9"	#R-RTS-1009
15"	#R-RTS-1015
21"	#R-RTS-1021
31"	#R-RTS-1031
41"	#R-RTS-1041

Hooks available crimped or un-crimped.

EPDM SYNTHETIC RUBBER

4"	#R-RTSE-1004
9"	#R-RTSE-1009
15"	#R-RTSE-1015
21"	#R-RTSE-1021
31"	#R-RTSE-1031
41"	#R-RTSE-1041

Hooks available crimped or un-crimped.

ADJUSTABLE TARP STRAPS



24" NATURAL RUBBER

#R-RTS-1024ADJ

24" EPDM SYNTHETIC RUBBER

#R-RTSE-1024ADJ

RUBBER ROPE | Import



HOLLOW CORE

3/8"
7/16"

COIL (150')

#R-RR-3750HI
#R-RR-4375HI

BULK

#R-RR-3750HI-BULK
#R-RR-4375HI-BULK

SOLID CORE

3/8"
7/16"

COIL (150')

#R-RR-3750SI
#R-RR-4375SI

BULK

#R-RR-3750SI-BULK
#R-RR-4375SI-BULK

Additional sizes and lengths available upon request.

RUBBER ROPE | Domestic



HOLLOW CORE	COIL (150')	BULK
3/8"	#R-RR-3750H	#R-RR-3750H-BULK
7/16"	#R-RR-4375H	#R-RR-4375H-BULK
SOLID CORE	COIL (150')	BULK
3/8"	#R-RR-3750S	#R-RR-3750S-BULK
7/16"	#R-RR-4375S	#R-RR-4375S-BULK

Additional sizes and lengths available upon request.

SHOCK CORD



BLACK	SPOOL	BULK
1/8"	#R-SC0125-SPOOL-B	#R-SC0125-BULK-B
3/16"	#R-SC01875-SPOOL-B	#R-SC01875-BULK-B
1/4"	#R-SC025-SPOOL-B	#R-SC025-BULK-B
5/16"	#R-SC031-SPOOL-B	#R-SC031-BULK-B
3/8"	#R-SC038-SPOOL-B	#R-SC038-BULK-B
1/2"	#R-SC050-SPOOL-B	#R-SC050-BULK-B
5/8"	#R-SC062-SPOOL-B	#R-SC062-BULK-B
3/4"	#R-SC075-SPOOL-B	#R-SC075-BULK-B



WHITE W/ BLACK TRACER	SPOOL	BULK
1/8"	#R-SC0125-SPOOL-W	#R-SC0125-BULK-W
3/16"	#R-SC01875-SPOOL-W	#R-SC01875-BULK-W
1/4"	#R-SC025-SPOOL-W	#R-SC025-BULK-W
5/16"	#R-SC031-SPOOL-W	#R-SC031-BULK-W
3/8"	#R-SC038-SPOOL-W	#R-SC038-BULK-W
1/2"	#R-SC050-SPOOL-W	#R-SC050-BULK-W
5/8"	#R-SC062-SPOOL-W	#R-SC062-BULK-W
3/4"	#R-SC075-SPOOL-W	#R-SC075-BULK-W

Standard spool size is 250' (custom put-ups available).
Various bulk put-up lengths available per customer request.

CORDAGE HOOKS & FITTINGS



"S" HOOK F/ TARP STRAPS
#H-RTS-SHK



"SJ" HOOK F/ RUBBER ROPE & SHOCK CORD

#H-RR-SJ
For sizes 3/8"-7/16".



BLACK PLASTIC ADJUSTABLE HOOK F/ RUBBER ROPE & SHOCK CORD

#H-PCHK
For sizes 3/16"-3/8".



PVC COATED STEEL SPRING HOOKS F/ SHOCK CORD

3/16"	#H-SPHK01875-C
1/4"	#H-SPHK025-C
5/16"	#H-SPHK031-C
3/8"	#H-SPHK038-C
1/2"	#H-SPHK050-C



DICHROMATED STEEL SPRING HOOKS F/ SHOCK CORD

3/16"	#H-SPHK01875-P
1/4"	#H-SPHK025-P
5/16"	#H-SPHK031-P
3/8"	#H-SPHK038-P
1/2"	#H-SPHK050-P



HOG RINGS

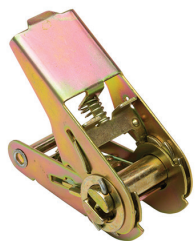
#H-HR
Various sizes available.



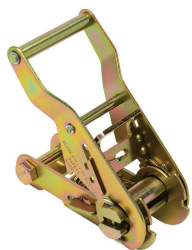
HOG RING PLIERS

#H-HRP

RATCHETS



1" LT DUTY
#H-94111-015



1" WIDE HANDLE
#H-94121B-033



1" STAINLESS WIDE HANDLE
#H-94125B-033



2" LT DUTY WIDE HANDLE
#H-94220-045



2" STANDARD HANDLE
#H-94211-110



2" WIDE HANDLE
#H-94221-110



2" STAINLESS WIDE HANDLE
#H-94225-088



2" HD WIDE RUBBER HANDLE
#H-94230-132



2" LONG WIDE HANDLE
#H-94231-110

RATCHETS | contd.



3" STANDARD HANDLE
#H-94311-220

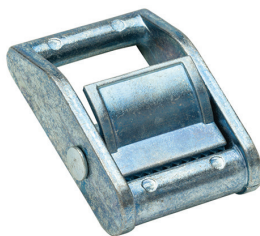


4" STANDARD HANDLE
#H-94411-240

CAM BUCKLES



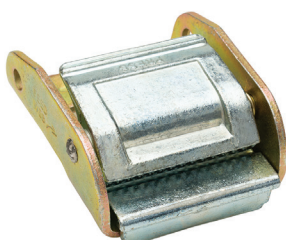
1" LT DUTY
#H-94141-005



1"
#H-94141-010

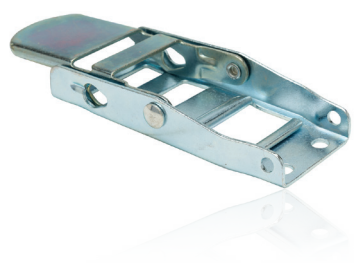


1"
#H-94141-015



2" HD
#H-94241-025

OVERCENTER BUCKLES



2"
#H-94251-018



2" STAINLESS
#H-94255-018



2" STAINLESS W/ SPRING LATCH
#H-94255P-018



2" HD W/ SPRING LATCH
#H-94251-044

CAR LASHING BUCKLES



1"
#H-94157-033



1" W/ PVC DIP TONGUE
#H-941579-033

ATTACHMENT HARDWARE | Rings



1" WELDED WIRE
#H-96126D1-030



1" WAISTED
#H-96101-033



1-3/4" WELDED WIRE
#H-96175-040



2" LT DUTY WELDED WIRE
#H-9626D1-040



2" WELDED WIRE
#H-9626D1-100



2" WELDED WIRE CIRCLE
#H-9626CD1-100



2" FLAT STAMPED
#H-9626D1-110



**2" FLAT STAMPED
W/ ABRASION CLIP**
#H-9626DA1-110



3" FORGED
#H-96351-180

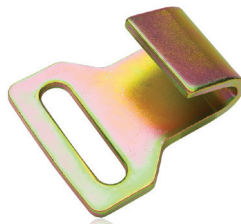


4" FORGED
#H-96451-200

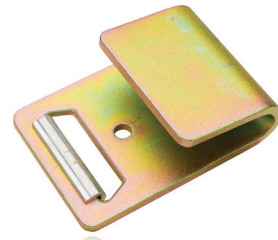
ATTACHMENT HARDWARE | Flat Hooks



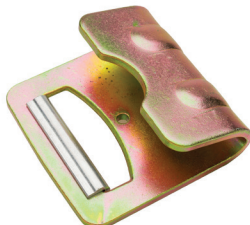
1"
#H-96111-009



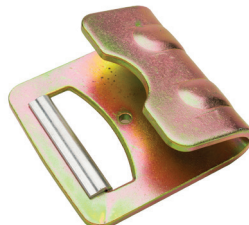
2" NARROW
#H-96211-066



2" W/ ABRASION CLIP
#H-96211A-100



3" W/ ABRASION CLIP
#H-96311A-162



4" W/ ABRASION CLIP
#H-96411A-162



4" ROLL-OFF CONTAINER HOOK
#H-96420-162

ATTACHMENT HARDWARE | Wire Hooks



1"
#H-96131S-033



1" LONG
#H-96131L-033



2" LT DUTY "F"
#H-96231F-015



2" LT DUTY
#H-96231-050



2" F/ AUTO HAULER
#H-96231AS-080



3"
#H-96331-220

2"
#H-96231S-100

2" OPEN MOUTH F/ AUTO HAULER
#H-96231A0-060

ATTACHMENT HARDWARE | Snap Hooks



1"
#H-96121-033



2" LT DUTY
#H-96221-060



2"
#H-96221-100



2" TWISTED
#H-96221T-100

ATTACHMENT HARDWARE | S Hooks



1" LT DUTY VINYL COATED
#H-96149-015

1" HD VINYL COATED
#H-96149-025



1" LT DUTY PLATED
#H-96150-015

1" HD PLATED
#H-96150-025

ATTACHMENT HARDWARE | Chain End Fittings



**18" CHAIN ANCHOR W/
2" FLAT STAMP D-RING &
3/8" GRAB HOOK**
#H-96201-100



**18" CHAIN ANCHOR W/
2" PEAR LINK &
3/8" GRAB HOOK**
#H-96201-162



**18" CHAIN ANCHOR W/
3" V-RING &
3/8" GRAB HOOK**
#H-96301-162

ATTACHMENT HARDWARE | Chain End Fittings contd.



**18" CHAIN ANCHOR W/
4" V-RING
& 3/8" GRAB HOOK**
#H-96401-162



**3/8" GRAB HOOK
W/ PEAR LINK**
#H-96101-162

ATTACHMENT HARDWARE | RTJ Cluster Hooks



SINGLE LINK W/ FORGED "J"
#H-RTJ-SLF



SINGLE LINK W/ "WIRE J"
#H-RTJ-SLR



MULTI-LINK W/ FORGED "J"
#H-RTJ-3LF

ATTACHMENT HARDWARE | Snap Hook Carabiners



1/8"	#H-SH0125
3/16"	#H-SH01875
1/4"	#H-SH025
9/32"	#H-SH0281
5/16"	#H-SH031
11/32"	#H-SH0343
3/8"	#H-SH038
7/16"	#H-SH0437
15/32"	#H-SH0468
1/2"	#H-SH050
17/32"	#H-SH0531
9/16"	#H-SH0562

ATTACHMENT HARDWARE | Quick Links



1/8"	#H-QL0125
3/16"	#H-QL01875
1/4"	#H-QL025
9/32"	#H-QL0281
5/16"	#H-QL031
3/8"	#H-QL038
7/16"	#H-QL0437
1/2"	#H-QL050
17/32"	#H-QL0531

ATTACHMENT HARDWARE | Rubber Tire Cleats



2" W/ TREAD NUBS
#R-TC-2025

ATTACHMENT HARDWARE | Specialty Fittings



2" FLAT STAMP WEB ADJUSTER
#H-96202-ADJ



2" FLAT STAMP 3-BAR
WEB ADJUSTER
#H-96201-ADJ

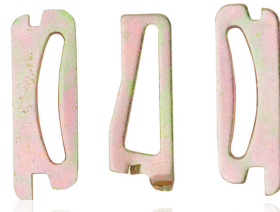


2" FORGED WEB ADJUSTER
#H-96203-ADJ

ATTACHMENT HARDWARE | Specialty Fittings contd.



2" E/A SERIES SPRING FITTING
#H-96281-030



2" 3-PIECE E/A SERIES FITTING
#H-96283-030



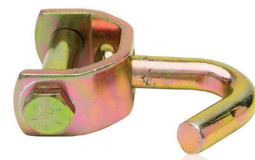
1" BOLT PLATE
#H-BP-981381



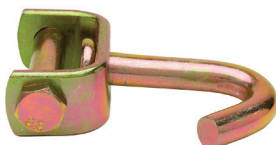
2" BOLT PLATE
#H-BP-982381



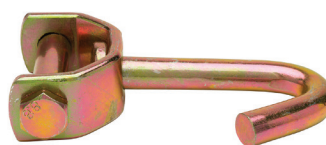
2" E/A WEB IDLER FITTING
#H-WIE-962



**2" WEB IDLER
SHORT HOOK W/ BOLT**
#H-WIS-962



**2" WEB IDLER
STANDARD HOOK W/ BOLT**
#H-WI-962



**2" WEB IDLER
LONG HOOK W/ BOLT**
#H-WIL-962



**2" WEB IDLER
"DOG LEG" HOOK W/ BOLT**
#H-WIDL-962



**FINGER "J" HOOK
F/ 2" RATCHETS**

#H-962RJF



**SWIVEL "J" HOOK
F/ 2" RATCHETS**

#H-962RSJH



**SNAP HOOK W/ SPACERS
F/ 2" RATCHETS**

#H-962RSH



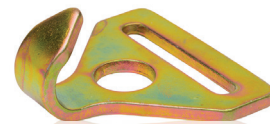
2" DOOR PULL CLIP

#H-962DPC



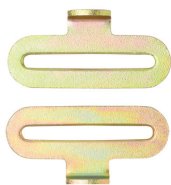
**MOUNTING PLATE F/
2" RATCHETS
(ADDS SECOND BOLT HOLE)**

#H-962RBP



SERIES "F" PLATE HOOK

#H-96201-FHK



SERIES "F" BUTTERFLY FITTING

#H-96201-FBF



**CHAIN ADAPTER CLIP
F/ 2" RATCHETS**

#H-97201-100

ATTACHMENT HARDWARE | Lacing D-Rings



1-1/8" PLATED	#H-3250-0118
1-1/4" PLATED	#H-3250-0125
1-3/4" PLATED	#H-3250-0175

Lacing D-Rings are non-rated.

ATTACHMENT HARDWARE | Rave Hooks



2" CLOSED
#H-962301-033

ATTACHMENT HARDWARE | Car Lashing Hooks



1"
#H-96107-033



1" PVC DIPPED
#H-961079-033

WEBBING | Polyester Tie Down Webbing



1"	3,500LB	300' ROLL	#W-TP1-3.5K
2"	6,000LB	300' ROLL	#W-TP2-6K
2"	12,000LB	300' ROLL	#W-TP2-12K
3"	18,000LB	300' ROLL	#W-TP3-18K
4"	20,000LB	300' ROLL	#W-TP4-20K
4"	24,000LB	300' ROLL	#W-TP4-24K

Various colors available.

WEBBING | Nylon Sling Webbing



1"	9,800LB	300' ROLL	#W-NS1-9.8K
2"	19,600LB	300' ROLL	#W-NS2-19.6K
3"	29,400LB	300' ROLL	#W-NS3-29.4K
4"	39,200LB	300' ROLL	#W-NS4-39.2K
5"	49,000LB	300' ROLL	#W-NS5-49K
6"	58,800LB	300' ROLL	#W-NS6-58.8K
8"	78,400LB	300' ROLL	#W-NS8-78.4K
10"	98,000LB	300' ROLL	#W-NS10-98K
12"	117,600LB	300' ROLL	#W-NS12-117.6K

WEBBING | Polyester Strapping



1-3/4" 6,000LB 300' ROLL
BLACK
#W-TP1.75-6K

WEBBING | Seatbelt



2" POLYESTER 575' ROLL (NON-RATED)

#W-SB2-NR-X

Various colors available.

WEBBING | Protective Sleevings



2-3/8" x 12" BLACK

2-3/8" x 24" BLACK

2-3/8" BLACK BULK (ROLL SIZES VARY)

4-1/2" x 12" BLACK

4-1/2" x 24" BLACK

4-1/2" BLACK BULK (ROLL SIZES VARY)

#W-CS-2038-12

#W-CS-2038-24

#W-CS-2038-BULK

#W-CS-4050-12

#W-CS-4050-24

#W-CS-4050-BULK

Additional sizes and lengths available upon request.

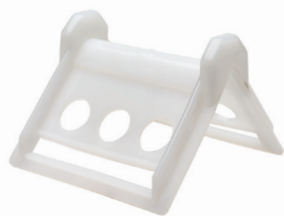
STRAP WINDERS



STRAP WINDER PAINTED F/ 1"-4" WEBBING

#H-SW14

CORNER PROTECTORS



4" PLASTIC CORNER PROTECTOR
#P-CP04



12" PLASTIC CORNER PROTECTOR
#P-CP12



"RIGID STYLE" V - BOARD BLUE

12"	#P-CPVR12
24"	#P-CPVR24
36"	#P-CPVR36
48"	#P-CPVR48

48" PLASTIC CORNER PROTECTOR
#P-CP48



"FLEXIBLE STYLE" V - BOARD BLACK

12"	#P-CPVF12
24"	#P-CPVF24
36"	#P-CPVF36
48"	#P-CPVF48



**5" STEEL CORNER PROTECTOR
F/ STRAPS**
#H-CP05S



**13.5" STEEL CORNER PROTECTOR
F/ STRAPS**
#H-CP135S



**6" STEEL CORNER PROTECTOR
F/ CHAIN, CABLE, & ROPE**
#H-CP06S



**6" RUBBER COVERED STEEL
CORNER PROTECTOR
F/ CHAIN, CABLE, & ROPE**
#H-CP06S-RC



**RUBBER CORNER PROTECTOR
F/ 1"-2" WEBBING**
#R-CP12



**RUBBER CORNER PROTECTOR
F/ 3"-4" WEBBING**
#R-CP34



TARP CORNER PROTECTOR
#P-TCP



**END CAP F/ HORIZONTAL
E SERIES TRACK
BLACK**
#P-ECH



**END CAP F/ VERTICAL
E SERIES TRACK
BLACK**
#P-ECV



HOLE PLUG F/ E SERIES TRACK
BLACK
#P-EHP-B
ORANGE
#P-EHP-O

RUBBER BANDS



PCI CREPE NATURAL
#R-RB-PCI-N
Various sizes available.



PCI CREPE COLORED
#R-RB-PCI-C
Various sizes available.



NCI COMPOUND NATURAL
#R-RB-NCI-N
Various sizes available.



NCI COMPOUND COLORED
#R-RB-NCI-C
Various sizes available.



NEWSPAPER BANDS
#R-RB-NSP
Various sizes available.



PALLET/MOVER BANDS
#R-RB-PM
Various sizes available.



CRAB POT BANDS
#R-RB-CRAB
Various sizes available.



LOBSTER CLAW BANDS
#R-RB-LOBSTER
Various sizes available.



TAB BANDS
#R-RB-TAB
Various sizes available.

WHEEL CHOCKS

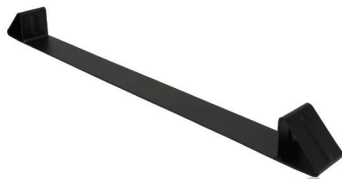


**SINGLE SIDED W/
EYELET 9.25"D X 6.75"W X 8"H**
#R-WC-SSS-E



**DOUBLE SIDED W/
EYELET 8"D X 10"W X 6"H**
#R-WC-DSH-E

COIL RACKS



LIGHT DUTY COIL RACK
#H-CRLT



HEAVY DUTY COIL RACK
#H-CRHD

SERVICES WE OFFER

We have maintained relationships for over 30 years with many trusted primary manufacturers, both foreign and domestic, of rubber, steel, webbing, and plastics products. This diversification and extensive industry background has allowed us to offer myriad services to our customers including product sourcing, manufacturing, design, and industry consulting.

MANUFACTURING CAPABILITIES

- Rubber Extrusion & Molding
- Stamping & Plating
- Forging & Heat Treating
- Wire Forming
- Textile Weaving (Webbing)
- Plastic Injection Molding
- Fabrication
- Product Assembly

INDUSTRY SERVICES

- Product Sourcing
- Prototype Design
- Import
- Engineering & Product Design
- Industry Consulting
- Marketing

If you have any questions regarding our products or services, please feel free to drop us an email (info@hcoindustries.com) or give us a call at (503) 678-2086. We look forward to working with you!



NOTES

NOTES



Visit Us Online for Warnings, Warranty, and Terms & Conditions


 **Phone:**
(503) 678-2086


 **Fax:**
(503) 678-2182

 **Website:**
hcoindustries.com

 **General Contact Email:**
info@hcoindustries.com

 **Customer Service Email:**
customerservice@hcoindustries.com

 **Mailing Address:**
P.O. Box 678
Donald, OR 97020

 **Physical Address:**
10749 Oak Street NE #4
Donald, OR 97020